

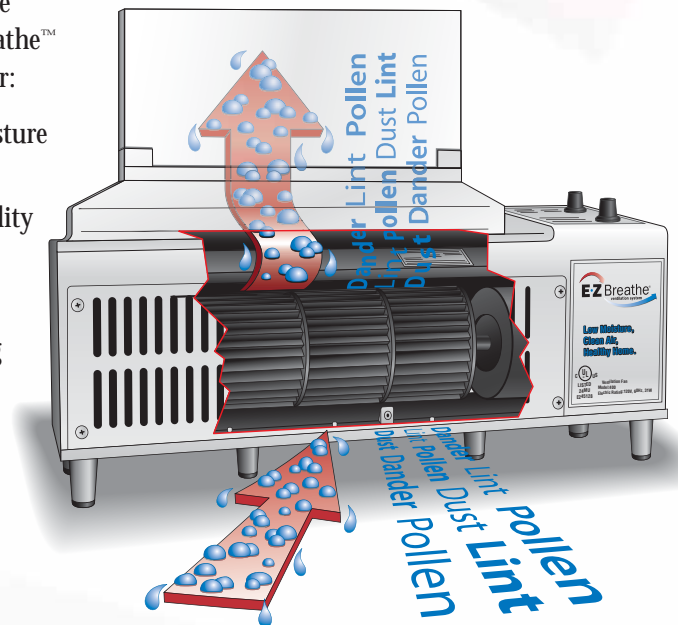


**Sell them more than a service:**

**Sell them healthier living,  
with E•Z Breathe™.**

Help your customers achieve a cleaner, healthier living environment with The E•Z Breathe™ Ventilation System. E•Z Breathe™ is the ultimate dehumidifier and air purifier—at half the cost of ownership—with no on-going maintenance responsibilities. E•Z Breathe™ is the leading solution for:

- eliminating excess moisture in the home
- reducing indoor humidity
- expelling polluted air from the home
- dramatically improving quality of indoor air



## Install Peace Of Mind

### With E•Z Breathe™

#### The Problem:

According to the EPA, the air in the average American home or building is three to five times more polluted than outdoor air.

The World Health Organization (WHO) states “indoor air pollution causes 14 times more deaths than outdoor pollution, or about 2.8 million lives each year.”

Lack of ventilation and excess moisture add to this existing problem by harboring toxins, allergens and promoting the growth of mold and mildew.

#### The Proven Solution:

E•Z Breathe™ is guaranteed to make a dramatic difference in the moisture levels in the home while combating destructive dampness in three simple steps:

- 1. Ventilation.** E•Z Breathe™ draws moist, stale air out of the building.
- 2. Replenishment.** It replaces moist air with fresh, dry air. A complete air exchange occurs about 10 times each day.
- 3. Regulation.** Airflow is monitored to reach and maintain a desired level of humidity.

#### Get Measurable Results With E•Z Breathe™

In addition to the improved quality of life, customers will enjoy added benefits of the E•Z Breathe™ system, as well:

- Maintenance free with no filters to change or buckets to empty
- Energy efficient: Operates for \$2–\$4 per month
- Lowers overall heating bills
- Quiet-running, compact unit allows for unobtrusive operation

*“For years we had problems with mold, mildew and musty smells in our church. We are located on a wooded lot along a river. We had trouble with mold in the books in the library and forming on the walls in the pastor’s study. Once the E•Z Breathe was installed, the mold and mildew was gone, the air smelled fresh.*

*The most unexpected benefit was that several in the congregation with allergies were no longer bothered with watery, itchy eyes and stuffy noses that they had before. I was one of those people that had an allergic reaction to the mold and mildew. Now I can even wear my contacts to church, which I had never been able to do before we got the E•Z Breathe installed. It has definitely improved the air quality in our church. Thank you E•Z Breathe!”*

Pam Lambert  
Member, Christian Assembly Holsopple, PA



## Easy To Install, Efficient Operation, And Performance That Can't Be Beat

“E•Z Breathe™ has given us a tremendous advantage in the field. With this product, we're pleased to provide a healthier living environment for our customers—and they're thrilled with the immediate results they see and feel in their homes.”

—*Jim Gielty, owner*  
*EverDry Waterproofing of Cincinnati*

Lightweight and compact, E•Z Breathe™ is quick and simple to install: Average installation takes only 1 1/2 – 2 hours. Once installed, E•Z Breathe™ goes to work, backed by a worry-free guarantee.

### Key Selling Points:

- Maintenance free with no filters to change or buckets to empty
- Energy efficient: Operates for less than \$2 per month
- Lowers overall heating bills
- Quiet-running, compact unit allows for unobtrusive operation
- Large capacity: One unit does work comparable to seven dehumidifiers
- Versatile: Can be used in full basements, slabs or crawl spaces
- Flexible installation options – against unfinished or finished wall. Can also be recessed behind drywall for nice finished look.



# Every Breath You Take

Common contaminants that affect the quality of indoor air:

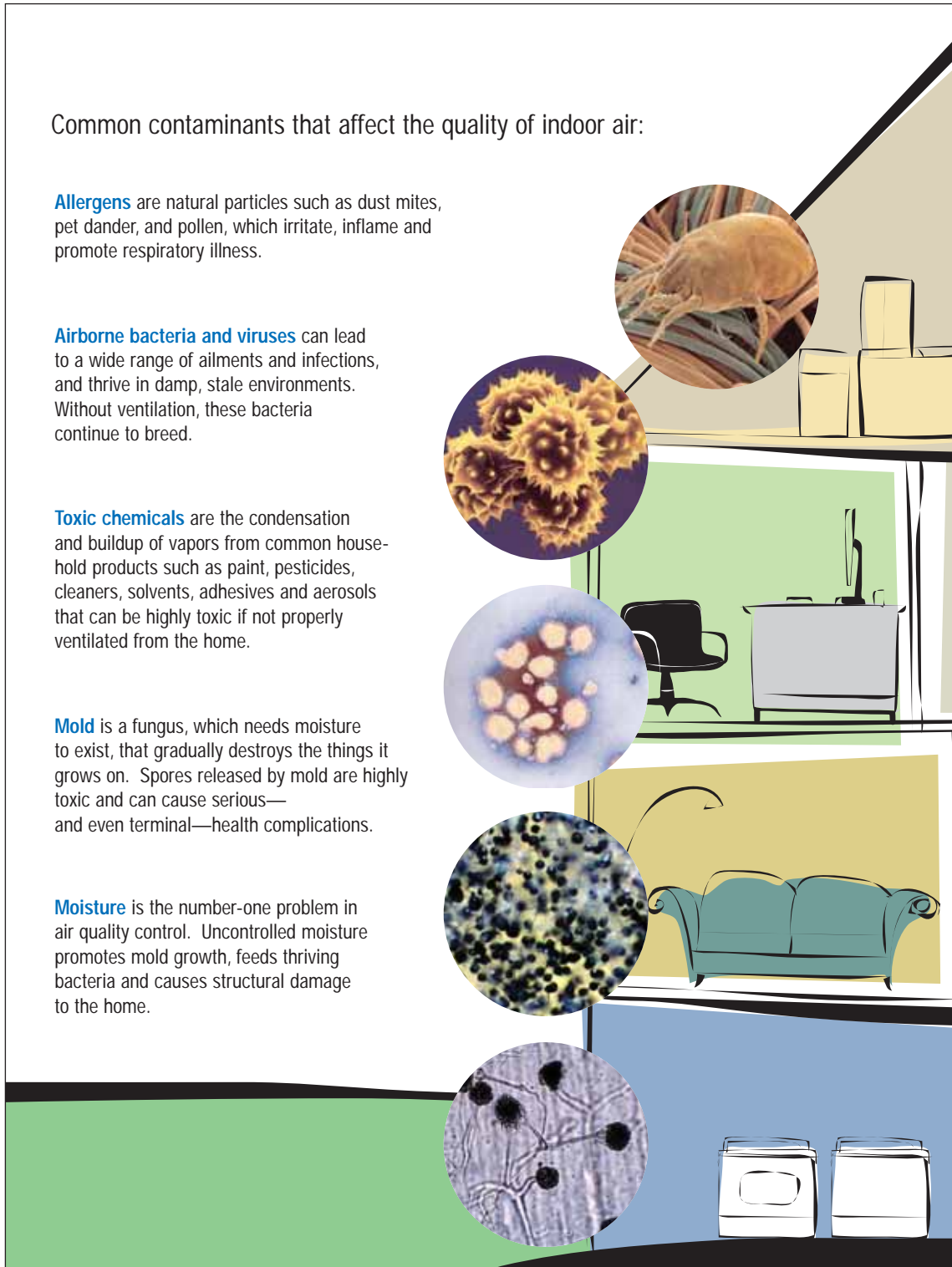
**Allergens** are natural particles such as dust mites, pet dander, and pollen, which irritate, inflame and promote respiratory illness.

**Airborne bacteria and viruses** can lead to a wide range of ailments and infections, and thrive in damp, stale environments. Without ventilation, these bacteria continue to breed.

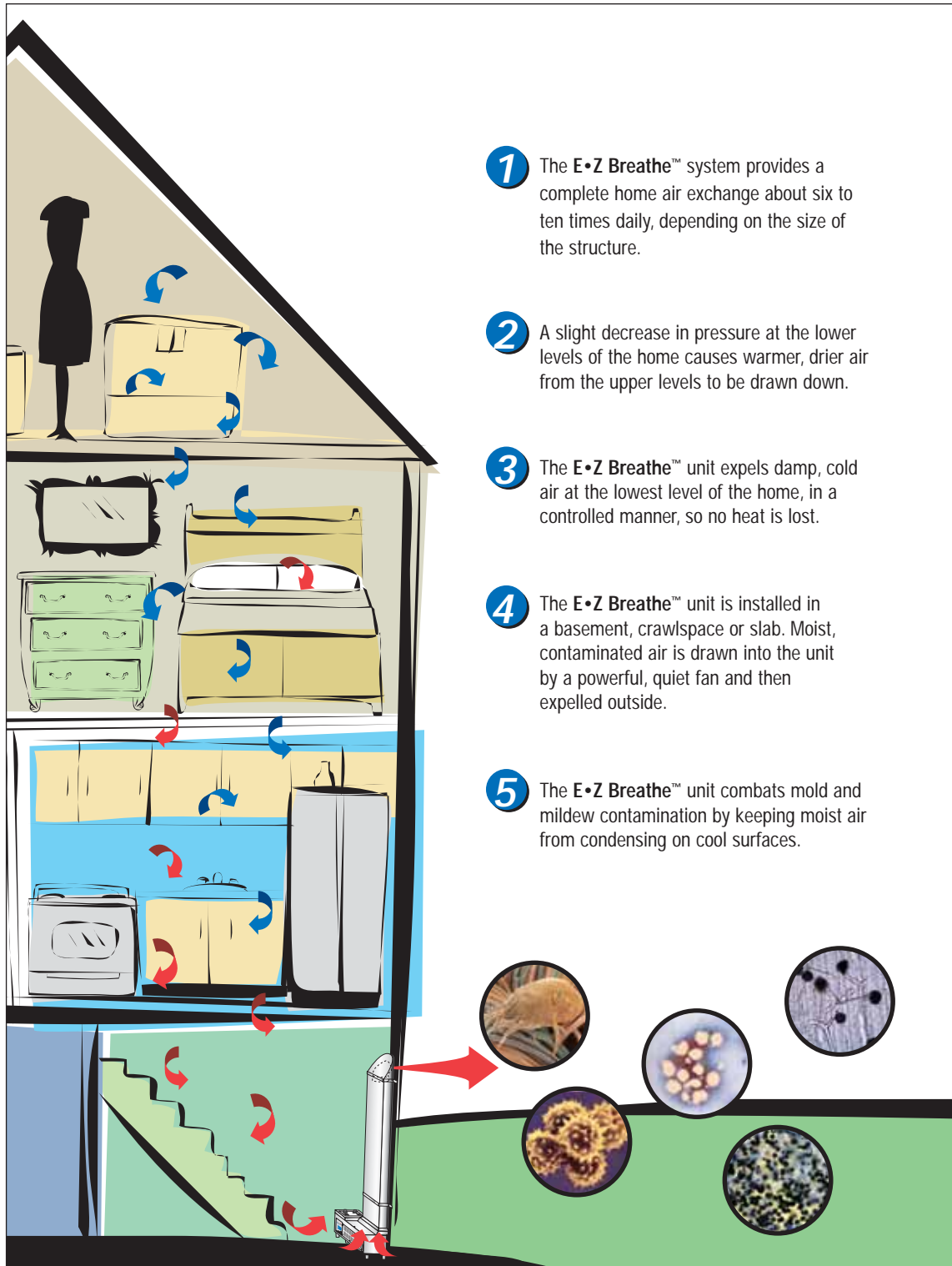
**Toxic chemicals** are the condensation and buildup of vapors from common household products such as paint, pesticides, cleaners, solvents, adhesives and aerosols that can be highly toxic if not properly ventilated from the home.

**Mold** is a fungus, which needs moisture to exist, that gradually destroys the things it grows on. Spores released by mold are highly toxic and can cause serious—and even terminal—health complications.

**Moisture** is the number-one problem in air quality control. Uncontrolled moisture promotes mold growth, feeds thriving bacteria and causes structural damage to the home.



# How the E•Z Breathe™ System Works



- 1 The E•Z Breathe™ system provides a complete home air exchange about six to ten times daily, depending on the size of the structure.
- 2 A slight decrease in pressure at the lower levels of the home causes warmer, drier air from the upper levels to be drawn down.
- 3 The E•Z Breathe™ unit expels damp, cold air at the lowest level of the home, in a controlled manner, so no heat is lost.
- 4 The E•Z Breathe™ unit is installed in a basement, crawlspace or slab. Moist, contaminated air is drawn into the unit by a powerful, quiet fan and then expelled outside.
- 5 The E•Z Breathe™ unit combats mold and mildew contamination by keeping moist air from condensing on cool surfaces.

# E•Z Breathe™ Technical Data

## Model 400

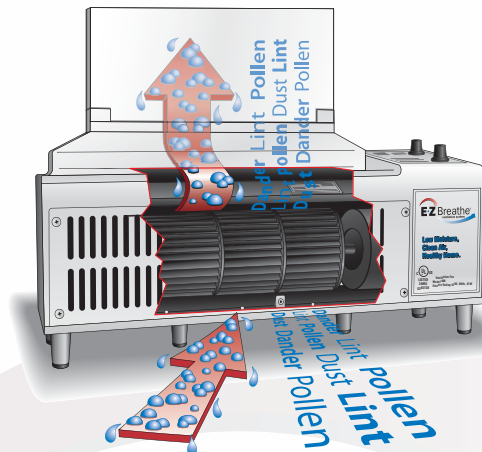
### Base Dimensions:

- Height:** 8 inches (20.32cm)
- Width:** 20 inches (50.8cm)
- Depth:** 6 inches (15.24cm)
- Weight:** 16 lbs. (7.3kg)

### Chute Dimensions:

- Height:** Extends up to 102" tall (259.08cm)
- Width:** 12 inches (30.48cm)
- Depth:** 2.5 inches (6.35cm)

- Area serviced per unit: 7000 sq. ft.
- Air Flow: 176 CFM's
- Noise Level: 35db
- Amperage: 0.30 amps
- Voltage: 110 volts
- Tube axle Fan, 1 phase
- Energy consumption: 31 watts
- CSA Certification: File No. LR52898
- UL Certification: File No. E245128



## How Does E•Z Breathe™ Work?

The E•Z Breathe™ is a device that expels the dampest, coldest most contaminated air from your home to the outside. The most common question asked by homeowners is: **“If the air is exhausted outside, do we lose any heat?”** The answer is no. Since E•Z Breathe™ eliminates only the damp, cold, air at the lowest level of your home, the potential

for losing heat is low. If we go on the principle that damp spaces are harder to heat than dry ones, it's more economical to replace that damp air with dry air and then heat it. Once the E•Z Breathe™ has exhausted the damp air outside and replaces it with dry air from the higher levels of your house, it will shut off. The E•Z Breathe™ continuously monitors the humidity levels, turning itself on as humidity levels increase.

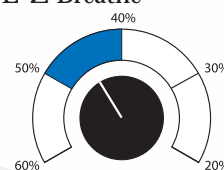
## The Humidistat Setting

This component continuously monitors the humidity level of the air being expelled through the E•Z Breathe™ unit. You can set this control to maintain the desired level of humidity in your home/building.

For best results:

In the summer, set the humidistat between 40%-50%

In the winter, set the humidistat between 30%-40%



PLEASE NOTE... Even though the ideal setting would be 55% during the summer and 35% during the winter, these levels of humidity, due to environmental conditions, may or may not be obtainable. When the desired humidity level has been achieved, the E•Z Breathe™ unit will automatically turn off, and then on again as the humidity level increases. The E•Z Breathe™ will run continuously until desired level has been reached. Don't worry; the unit has been designed to perform under these conditions. During winter / colder periods when the furnace is often running, the unit may shut off due to the humidistat reaching the desired humidity level. During these periods, you can set the humidistat to its lowest setting and turn the fan to low. This will cause the unit to run on low continuously, providing ventilation for the space without exhausting heated air.

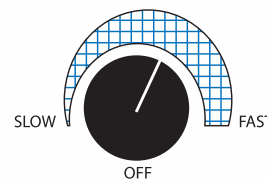
## Fan Speed Control

The rate at which you expel the air outside is adjustable with the help of this control.

For best results:

In the summer, set the speed control on med – high.

In the winter, set the speed control to med – low.



VENTILATION ONLY: Humidistat to 20% and Fan Speed to slow.

## What Customers Are Saying About E•Z Breathe™ ...

“Now when we enter our house, it feels like we’re walking into a new home! The E•Z Breathe™ system has helped to solve our moisture and mold problem, and completely removed the stale, musty odor — for good.”

—*Richard and Tonya Spaggins*

“What a difference the E•Z Breathe™ system has made in the air quality in my nail salon! Our customers keep asking us what we have done to freshen the air and I just point to your product with pride. We never realized how much of an odor the salon had until it was gone. Thank you for providing a more welcoming atmosphere for our customers and a healthier environment for us to work in.”

—*Barbara Phillips, In and Out Nails*

“We truly enjoy our E•Z Breathe™ system because it not only ventilates, it saved us \$40 on our next electric bill. We now only have to run our dehumidifier on very humid days, not 24/7, like before. We figure the E•Z Breathe™ unit will save us an average of \$480 a year on our electric bill. Once again, we would like to thank you for this wonderful product.”

—*Breathing Easier, Larry and Peg Furbee*

“I love my E•Z Breathe™ system. We have five cats and three litter pans and I can no longer smell them when I go down to the basement.”

—*Kathy Sledy*

“The E•Z Breathe™ unit is one of the best investment we’ve ever made. The house now has a fresh and clean smell all the time. The unit is so quiet...you can’t hear it working, but you can definitely feel the results. Thank you!”

—*Bobby D. Rhinehardt*

“I am the owner of an environmental inspection company specializing in Indoor Air Quality Assessments in residential and commercial properties. My mold/bacteria contaminated building consultations have dramatically increased over the past 2-3 years. Your E•Z Breathe™ has proven time and again, over some extremely contaminated areas, to reduce fungus and bacteria growth and remains a required part of the EPA Guidelines of Source, Control, Ventilation and Air Cleaning. The system effectively removes contaminated air from the building...reducing the amount of airborne contaminants and improving indoor air quality.”

—*George F. Riegel, Jr., M.D.*

*President/IAQ Medical Consultant, Healthy Homes, Inc.*





## Put E•Z Breathe's Marketability To Work For Your Business

### Cutting-edge E•Z Breathe™ Technology Leads Industry

**Ventilation is the fastest growing segment of the home improvement industry.** The E•Z Breathe™ Ventilation System is the leading product on the market today that addresses airflow issues and actually improves indoor air quality.

**The Need.** Poor ventilation is an issue in old and new homes alike. Builders today are constructing homes and office buildings that meet high energy-efficiency standards, yet lack proper airflow. These newer airtight buildings are the root cause of elevated indoor air pollution.

**The Awareness.** With mold-related problems and lawsuits making front-page news, consumers today are educated about the real dangers posed by mold, poor ventilation and stagnant air inside their homes, office buildings and schools.

Celebrity lawsuits, including those filed by Erin Brockovich and Ed McMahon, have drawn even greater attention to what has become a nationwide crisis.

**The Solution.** The EPA cites "sufficient airflow achieved through ventilation" as the leading means for combating problems associated with poor indoor air quality.

**The Technology.** E•Z Breathe™ uses cutting-edge technology to improve the quality of indoor air. Unlike dehumidifiers or air purifiers, E•Z Breathe™ dispels polluted air from inside the home and replaces it with clean, fresh air.

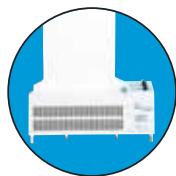
**The Advantage.** Because of its superior technology and proven results, E•Z Breathe™ sells itself. That marketability offers an attractive, lucrative business opportunity for E•Z Breathe™ distributors.

**Profitability.** E•Z Breathe™ offers an excellent opportunity to expand your business, with a proven sales program, professional marketing support, and very little overhead.



# E•Z Breathe™ vs. dehumidifier and air purifier/ionizer

## *E•Z Breathe™ Ventilation System: The Clean, Clear Choice For A Healthy Home*



E•Z Breathe™ Unit

vs.



Dehumidifier

&



Air Purifier/Ionizer

✓ No filters to change. The E•Z Breathe™ unit completely expels contaminated air.

No filters, as these units do not eliminate mold spores or contaminated air.

Costly filters need to be cleaned and replaced frequently.

✓ No water reservoir to empty.

Water reservoir must be emptied frequently and it encourages biological growth within it.

No reservoir, as purifiers do nothing to combat moisture or dampness.

✓ One E•Z Breathe™ unit controls moisture levels and air quality for up to 7000 sq. ft. (1 unit: 7 rooms)

Reduces moisture only in one room/general area. (7 units: 7 rooms)

Helps reduce particles in one room/general area. (7 units: 7 rooms)

✓ Uses same amount of electricity as 40-watt light bulb, or about \$2 to \$4 per month.

\$10 to \$30 per month for normal usage; higher for constant operation.

\$5 to \$15 per month for normal usage, plus up to \$350 per filter replacement.

✓ Guaranteed to make a difference in the moisture levels in the home; effective in combating destructive dampness; and provides ventilation essential to dramatically improving quality of indoor air.

Relatively effective at combating moisture in confined area. Can release harmful CFC's, promoting biological growth.

Air purifiers alter the molecular composition of the air creating serious health problems and even death. "Environmental Protection Agency does not certify air cleaning devices. The agency does not recommend air cleaning devices."

# E•Z Breathe™ Balanced System vs. HRV/ERV Comparison

EZ Breathe Balanced System	HRV/ERV
Whole home air exchange including basements and crawlspaces.	Does not treat basement or crawlspace air – dehumidifiers are still necessary.
Easy to install on both new construction and existing homes (about 3 hours labor).	Difficult to install on existing homes – high labor and material costs.
Works well in “green” homes with electric baseboard heat, radiant floor heat as well as traditional forced air furnaces.	Requires significant duct runs for “green” homes with radiant floor and electric baseboard heat.
Filters incoming air from pollens, dust mites, allergens, airborne bacteria and other pollutants.	Screens out larger particles.
Works well in both high humidity and in long heating climates.	ERV for high humidity climates. HRV for long heating seasons. No complete solution for climates that experience both.
During the heating season it expels the coldest, most polluted air in the home, therefore no heat exchanger is necessary.	During the heating season it expels the warmest, cleanest air in the home and relies on a heat exchanger to capture as much energy as possible.
During the summer it expels the dampest, most polluted air in the house. Uses a mixture of conditioned air and fresh air to condition the incoming air, the air conditioned air stays in the home.	During the summer it leaves the damp, most polluted air in the lower level and expels air conditioned air using it to dry out the incoming air.
Wash filter annually.	Difficult to maintain, with significant owner adjustments seasonally and filters require monthly cleaning.

- ➔ *Provides 6–10 air exchanges daily*
- ➔ *Controls airborne moisture*
- ➔ *Eliminates allergens & pollutants*



## Tools needed for E•Z Breathe™ Installation

- Rotary Hammer Drill
  - Capable of operating a 6" carbide tipped core bit
- 6" bi-metal hole saw with pilot bit
- 6" carbide tipped core bit with pilot bit and extended shaft
- 12–18 volt cordless or electric drill
- Humidity/temperature meter
- Silicone caulk
- Hammer
- Level
- Tin snips
- Additional flex pipe and straight pipe

### Accessory Parts\*:

- 20 ft. extension cord
- Z piece for installing behind drywall
- L piece for drop ceilings
- Extension chute

\*All tools and accessory parts are available from E•Z Breathe™ at discount distributor pricing.

### Installation tips:

- Flex Pipe comes with E•Z Breathe™ Unit and is optional. It can be used at full length or cut down for certain installations
- If the gap under the door to the basement/crawlspace is not sufficient (1-1/2" to 2") we install interior vents into the basement/crawlspace door or into the floor to the upper level of the home to bring proper replacement air into the lower level. Unit is placed as far away from replacement air source as possible depending on combustion and discharge of air.
- Drop ceilings can be moved or cut for proper installation



**DISTRIBUTORSHIP AVAILABLE**

# Distributorship Available

## E•Z Breathe™ Distributorship —

### E•Z Breathe™ Distributorship Includes:

- 2-Day Workshop at E•Z Breathe™ Corporate Headquarters in Macedonia, Ohio

**DAY ONE:** Spent in-house with our technical, R&D, sales and marketing teams

- Expand your technical knowledge of relative humidity, indoor air quality, ventilation, mold and mildew
- Learn our proven sales, marketing, and trade show techniques

**DAY TWO:** Spend the morning with certified E•Z Breathe™ installers in the field

- Learn the tricks of the trade and benefit from our experience, product expertise, and direct customer feedback
- Implementation of proven marketing plan
- Introduction to our financing program
- Overview of complementary product line
- E•Z Breathe™ Certified installer certification
- E•Z Breathe™ Marketing Manual
- E•Z Breathe™ Master Installation Manual
- E•Z Breathe™ Direct Mail Campaign
- E•Z Breathe™ Marketing Video
- One FREE E•Z Breathe™ Unit
- \$500 Advertising Voucher
- 100 FREE 4 color tri-fold E•Z Breathe™ Brochures
- Financing Program
- Co-op Advertising Program
- Distributor Pricing on complementary products



# Distributorship Application

## Applicant Information

Name (First, Middle, Last) \_\_\_\_\_ Date \_\_\_\_\_  
 Address \_\_\_\_\_ Phone# \_\_\_\_\_  
 \_\_\_\_\_ Soc. Sec. # \_\_\_\_\_  
 \_\_\_\_\_ e-mail \_\_\_\_\_  
 City \_\_\_\_\_ State \_\_\_\_\_ Zip \_\_\_\_\_

## Business Information

Company Name \_\_\_\_\_ Co. Phone# \_\_\_\_\_  
 Address \_\_\_\_\_ Co. Fax# \_\_\_\_\_  
 \_\_\_\_\_ Fed. Tax ID # \_\_\_\_\_  
 City \_\_\_\_\_ State \_\_\_\_\_ Zip \_\_\_\_\_  
 Web Address \_\_\_\_\_ e-mail \_\_\_\_\_  
 Type of Business: Corporation Partnership Proprietorship Other Years in Business \_\_\_\_\_  
 Products and/or Services \_\_\_\_\_ # of Employees \_\_\_\_\_  
 Licensed: N Y - If yes, Indicate Licensed State(s) \_\_\_\_\_ Bonded: N Y  
 Name of Bank \_\_\_\_\_ Acct # \_\_\_\_\_  
 Address \_\_\_\_\_ City \_\_\_\_\_ State \_\_\_\_\_ Zip \_\_\_\_\_  
 Principle Bank Contact \_\_\_\_\_ Phone # \_\_\_\_\_ Fax # \_\_\_\_\_

## Business Background

Present Occupation \_\_\_\_\_ Position \_\_\_\_\_  
 Company \_\_\_\_\_ Address \_\_\_\_\_ Phone# \_\_\_\_\_  
 Years w/Company \_\_\_\_\_ Supervisor \_\_\_\_\_ May we contact him/her? N Y  
 Previous Occupation \_\_\_\_\_ Position \_\_\_\_\_ Years there \_\_\_\_\_

## Industry Experience

Industry Type \_\_\_\_\_ Years in this type of business \_\_\_\_\_  
 Other relevant industry experience \_\_\_\_\_



### Business References

Company Name \_\_\_\_\_ Contact Name \_\_\_\_\_  
Address \_\_\_\_\_ Phone# \_\_\_\_\_  
\_\_\_\_\_ Fax # \_\_\_\_\_  
City \_\_\_\_\_ State \_\_\_\_\_ Zip \_\_\_\_\_

Company Name \_\_\_\_\_ Contact Name \_\_\_\_\_  
Address \_\_\_\_\_ Phone# \_\_\_\_\_  
\_\_\_\_\_ Fax # \_\_\_\_\_  
City \_\_\_\_\_ State \_\_\_\_\_ Zip \_\_\_\_\_

Company Name \_\_\_\_\_ Contact Name \_\_\_\_\_  
Address \_\_\_\_\_ Phone# \_\_\_\_\_  
\_\_\_\_\_ Fax # \_\_\_\_\_  
City \_\_\_\_\_ State \_\_\_\_\_ Zip \_\_\_\_\_

How did you hear about us? \_\_\_\_\_

Have you ever owned a dealership/distributorship/franchise before? \_\_\_\_\_

If so, give details \_\_\_\_\_

When do you anticipate initiating this product line? \_\_\_\_\_

Are you currently involved in any lawsuits or legal action? N Y - If yes, please explain \_\_\_\_\_

Additional skills/background that you would like us to know as it relates to this distributorship: \_\_\_\_\_

The undersigned certifies that all the information supplied on this application is true and correct, and authorizes the release and verification of credit information to E•Z Breathe™ Ventilation Systems, Inc.

Date \_\_\_\_\_ Applicant's Signature \_\_\_\_\_